



Current Transformer

Model IE53J

rev 11052025

CERTIFICATIONS:



APPLICATION:

Metering

FREQUENCY:

50/60 Hz.

INSULATION LEVEL:

720 Volts. 10 kV BIL. full wave

APPROXIMATE WEIGHT:

0.22 kg

CONNECTIONS:

Secondary terminals screw clamp up to 10mm² cable. 'Fast on' 6.3mm type. Integral Terminal Cover IP20B

ENCLOSURE CODE:

IP40

INSULATION CLASS:

Class E BS2757 IEC85

COMPLIES WITH / APPROVALS:

IEC60044-1:2003 / BSEN61010-1, EN60044-1

MOUNTING HARDWARE OPTION:

Order p/n: IE53J-FIXING-KIT

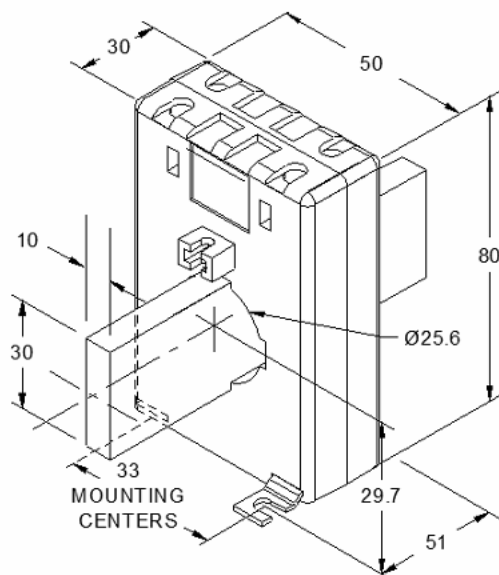
Model	IE53J
Window Size	30 x 10mm 25 x 15mm 20 x 20mm 25mm diameter
Width	50mm
Height	80mm
Depth	30mm

MODEL IE53J

CATALOG NUMBER	CURRENT RATIO	VA at Class 3	VA at Class 1
IE53J-100/5	100:5	1.25	-
IE53J-125/5	125:5	1.25	-
IE53J-150/5	150:5	2.5	-
IE53J-160/5	160:5	2.5	-
IE53J-200/5	200:5	2.5	2.5
IE53J-250/5	250:5	3.75	2.5
IE53J-300/5	300:5	5	3.75
IE53J-400/5	400:5	7.5	3.75

Note: Change the end suffix to depict required secondary. For example IE53J-200/1.

DIMENSIONS in mm



Products are manufactured in a plant whose quality management system has been certified to be in compliance with ISO 9001:2015 by NQA